

*Newmed*

**ANIMA LAB**  
animal facility and laboratory equipment • animal research models



**INFECTION CONTROL**  
our responsibility!

PRODUCT CATALOG



## THE WAY WE ARE

NEWMED is specialized in the development and production of infection control solutions such as STERILIZERS, ultrasonic cleaners, water purification systems, sealing devices and incubators.

In 2010, NEWMED was acquired by Midmark Corporation, with the objective to provide an even better global healthcare experience.

Our brand is especially renowned for the sterilizers which are characterized by FAST, ADVANCED AND PATENTED TECHNOLOGY and, therefore, can boast high reliability, rapid cycle times and classy Italian design.



infection  
control  
IS OUR  
RESPONSIBILITY!

COMMITMENT

FOR THE FUTURE

NEWMED is committed to provide  
SUPERIOR INFECTION CONTROL SOLUTIONS  
to the medical, dental and animal healthcare community.

We understand that your facility requires absolute  
reliability on the sterilization processes.

NEWMED gives you the peace of mind to focus on what's  
most important: YOUR PATIENTS!

# RELIABILITY

# BASED ON DESIGN

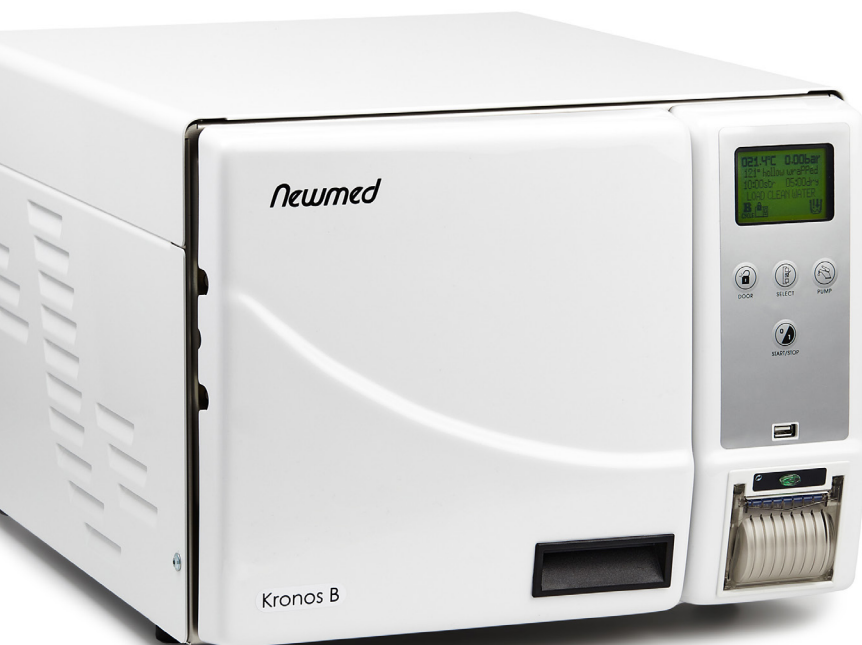
Clean yet elegant on the outside, reliable and uncomplicated on the inside, the Newmed sterilizer is your perfect partner for instrument processing in today's busy healthcare environment.

NEWMED sterilizers feature a sleek, stylish Italian design, to enhance the look of your practice.

Design is smooth with easily wipeable surfaces for effective DECONTAMINATION.

# WATER QUALITY: NO PROBLEM

GOOD QUALITY STEAM is essential for 100% fail-safe sterilization. It ensures that even the most difficult to reach areas of complex instruments are exposed to the right conditions for sterilization to occur.

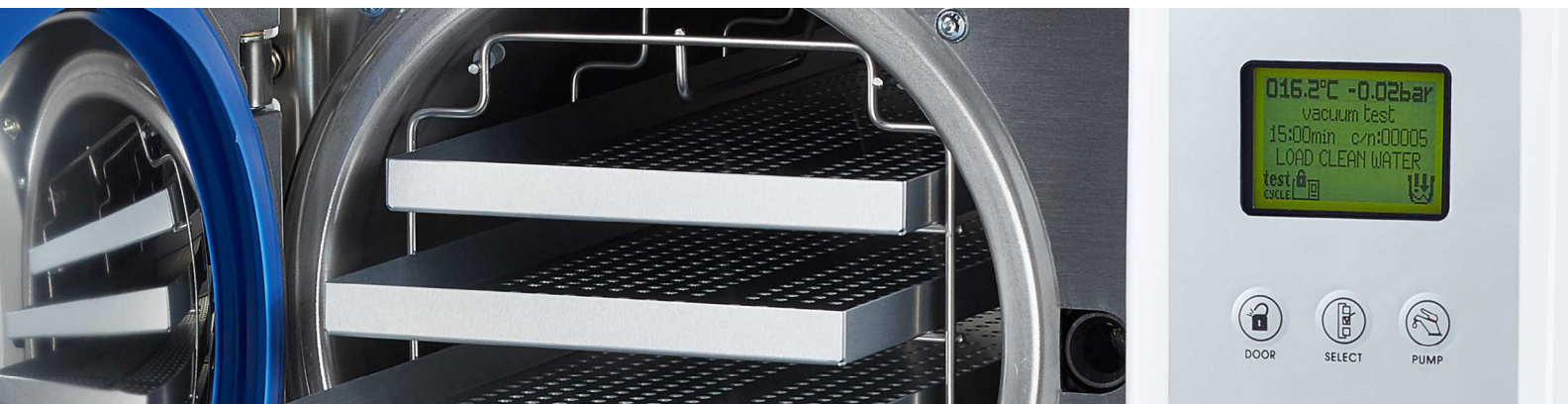


Good quality steam can only be produced if GOOD QUALITY WATER is used in its generation. If excellent water quality is not available in your ward: ROSI is the solution! ROSI is an optional integrated tri-cartridge water purification system which connects directly to your practice water supply.

**ROSI**  
Reverse Osmosis Steam Injection  
TECHNOLOGY

# OUTSTANDING TECHNOLOGY

NEWMED's experienced, forward thinking team of engineers have designed a sterilizer range with a FASTER PRINTER, FAIL-SAFE MOTOR-OPERATED DOOR LOCKING, IMPROVED DATA RECORDING functions, a more INTUITIVE USER INTERFACE and more INTELLIGENT DIAGNOSTICS TO SIMPLIFY MAINTENANCE procedures and maximize uptime.



## JUST IN TIME!

Assuming you will be using the sterilizer multiple times a day, a NEWMED sterilizer is a reliable, cost-effective unit for your practice.

For UNWRAPPED INSTRUMENTS, we ensure that sterilized instruments are available ON TIME for your next patient due to our faster, preprogrammed cycles. We ensure rapid throughput and no bottlenecks in your instrument workflow.

POUCHED ITEMS can be confidently stored until required.

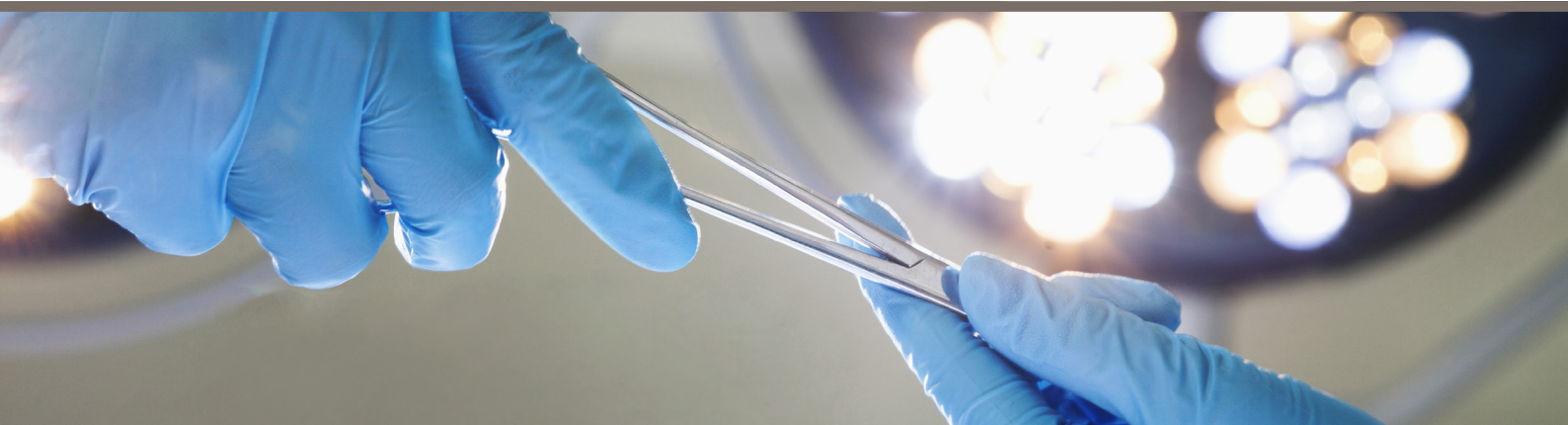
**QUIKSTEAM™**

NEWMED EXCLUSIVE QUIKSTEAM™ patented technology ensures UP TO 20% ACCELERATED CYCLE TIMES with a lower energy consumption – saving time for your doctors and caregivers and money for your facility.



## NEWMED TABLETOP STERILIZERS

- **RELIABLE:**  
Newmed sterilizers last longer due to top quality components made in Europe.
- **SIMPLE:**  
easy to use by everyone  
easy to service
- **TROUBLE FREE:**  
intelligent self-checking system alerts about maintenance needs.
- **SAFE:**  
multiple sensors check working parameters adapting cycle times to internal and external conditions.
- **PERFECT FOR YOUR NEEDS:**  
more than 10 pre-set validated sterilization programs.
- **CHAMBER CAPACITY:**  
6l, 18l, 23l, 60l.  
Available in B/S/N - CLASS.





**DOOR LOCKING:**

Motor operated door locking, guarantees total safety, greater ease of handling and reliable self regulation of the hatch.



**BUILT-IN THERMAL PRINTER:**

Standard accessory. During the sterilization process, an automatic print-out records the entire procedure, thereby providing a permanent record of every sterilization cycle. The paper printout can then be kept and attached to your files for a complete and accurate record.



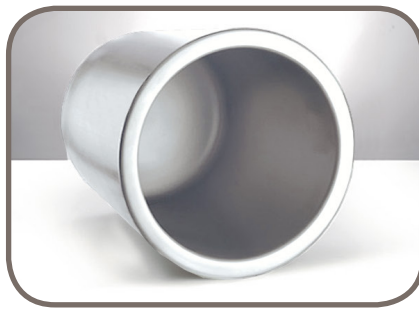
**MULTILINGUAL LCD DISPLAY AND USER FRIENDLY KEYPAD**

Just four buttons for simpler navigation to all sterilization options. The display shows current information about your sterilization cycles and alerts on errors or service needs.



**USB DATA LOG:**

Automatic digital cycle recording on USB stick (optional).



**CHAMBER:**

Made of thick one-piece moulded steel - Available in AISI 304 (standard) and AISI 316 (on demand).



**WATER PURIFICATION SYSTEM:**

With built-in ROSI, tri-cartridge water purification system your autoclave can be connected directly to your practice water supply (optional).



# KRONOS 6 L

## RECOMMENDED PROGRAMS

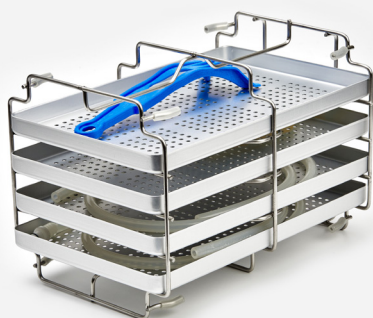
● OPEN ● WRAPPED

B-CLASS

TEMPERATURE AND NAME OF CYCLE	TYPE	TOTAL TIME	WEIGHT	STERILIZABLE MATERIALS AND INSTRUMENTS	WRPD
HELIX TEST - B&D TEST	Test	19 M	0	Steam penetration test	-
VACUUM TEST		15 M		Leak detection test	-
121° C HOLLOW WRAPPED	B	37 M	1,0	Delicate hollow, stainless steel hollow and turbines	●
134° C HOLLOW WRAPPED		28 M		Delicate hollow and turbines	●
121° C HOLLOW OPEN		33 M		Delicate hollow, stainless steel hollow and turbines	●
134° C HOLLOW OPEN		20 M		Stainless steel hollow and turbines	●
134° C PRION		40 M		Stainless steel hollow and metal instruments	●
134° C POROUS		36 M	0,5	Porous loads	●

S-CLASS

TEMPERATURE AND NAME OF CYCLE	TYPE	TOTAL TIME	WEIGHT	STERILIZABLE MATERIALS AND INSTRUMENTS	WRPD
B&D TEST	Test	35 M	0	Steam penetration test	-
VACUUM TEST		15 M		Leak detection test	-
121° C HOLLOW WRAPPED	S	50 M	1,0	Delicate hollow, stainless steel hollow and turbines	●
134° C HOLLOW WRAPPED		40 M		Stainless steel hollow and turbines	●
121° POROUS		55 M	0,5	Little delicate porous material	●
134° C FAST		37 M	1,8	Rubber and metal solids	●



NEWMED STERILIZERS ARE SUPPLIED WITH:

TRAYS HOLDER | ALUMINIUM TRAYS | LOADING AND DISCHARGE TUBES | CLEANING SPONGE | TRAYS REMOVAL HANDLE



# TECHNICAL DATA



KRONOS B6

B6	S6	
fractionated	pre and post vacuum	TYPE OF VACUUM
✓	-	INTEGRATED STEAM GENERATOR
Bowie&Dick Helix Vacuum	Bowie&Dick Vacuum	TEST PROGRAMS
✓		BUILT-IN PRINTER
		M.T.S MEMORY TEST SYSTEM
		CONNECTION TO DATA LOGGER
Optional		INTERNAL USB DATA LOGGER
450Wx590Dx345H mm		OVERALL MEASURES
ø170 x 265 mm		CHAMBER SIZE
	nr. 3 trays: 1 tray 150Wx240Dx19H mm 2 trays 115Wx240Dx19H mm	TRAY SIZES
230V ± 10%		SUPPLY VOLTAGE
50-60 Hz		MAINS FREQUENCY
2500 W	1500 W	RATED POWER

# KRONOS 18 L

## RECOMMENDED PROGRAMS

● OPEN ● WRAPPED

### B-CLASS

TEMPERATURE AND NAME OF CYCLE	TYPE	TOTAL TIME	WEIGHT	STERILIZABLE MATERIALS AND INSTRUMENTS	WRPD
HELIX TEST - B&D TEST	Test	22 M	0	Steam penetration test	-
VACUUM TEST		15 M		Leak detection test	-
121° C HOLLOW WRAPPED	B	50 M	2,5	Delicate hollow, stainless steel hollow and turbines	●
134° C HOLLOW WRAPPED		39 M		Stainless steel hollow and turbines	●
134° C PRION		54 M		Stainless steel hollow and metal instruments	●
134° C POROUS		50 M	1,0	Porous loads	●
134° C HOLLOW OPEN		36 M	4,0	Stainless steel hollow and turbines	●

### S-CLASS

TEMPERATURE AND NAME OF CYCLE	TYPE	TOTAL TIME	WEIGHT	STERILIZABLE MATERIALS AND INSTRUMENTS	WRPD
BOWIE & DICK TEST	Test	28 M	0	Steam penetration test	-
VACUUM TEST		15 M		Leak detection test	-
121° C HOLLOW WRAPPED	S	56 M	1,5	Delicate hollow, stainless steel hollow	●
134° C HOLLOW WRAPPED		45 M		Stainless steel hollow	●
134° C PRION		60 M		Stainless steel hollow and metal instruments	●
134° C POROUS		56 M	0,5	Little porous loads	●
134° C FAST		36 M	2,5	Rubber solids and metal solids	●

### N-CLASS

TEMPERATURE AND NAME OF CYCLE	TYPE	TOTAL TIME	WEIGHT	STERILIZABLE MATERIALS AND INSTRUMENTS	WRPD
121° C SOLIDS OPEN	N	48 M	1,5	Rubber solids and delicate solids	●
134° C SOLIDS OPEN		36 M		Rubber solids and metal solids	●
134° C PRION		50 M		Metal instruments	●
121° C FAST		38 M	3,0	Rubber solids and delicate solids	●
134° C FAST		28 M		Rubber solids and metal solids	●



# TECHNICAL DATA

B18	S18	N18	
fractionated	pre and post vacuum	Thermodynamic vacuum	TYPE OF VACUUM
✓			INTEGRATED STEAM GENERATOR
			BUILT-IN PRINTER
			M.T.S MEMORY TEST SYSTEM
			CONNECTION TO EXTERNAL DATA LOGGER
optional			INTERNAL USB DATA LOGGER
			INTEGRATED WATER PURIFICATION SYSTEM ROSI
505Wx615Dx400H mm			OVERALL MEASURES
ø236x381,5 mm			CHAMBER SIZE
nr. 4 trays: 185Wx285Dx18H mm			TRAY SIZES
230 V ± 10%			SUPPLY VOLTAGE
50-60 Hz			MAINS FREQUENCY
2400 W			RATED POWER

KRONOS B18

# KRONOS 23 L

## RECOMMENDED PROGRAMS

 OPEN  WRAPPED

### B-CLASS

TEMPERATURE AND NAME OF CYCLE	TYPE	TOTAL TIME	WEIGHT	STERILIZABLE MATERIALS AND INSTRUMENTS	WRPD
HELIX TEST - B&D TEST	Test	29 M	0	Steam penetration test	-
VACUUM TEST		15 M		Leak detection test	-
121° C HOLLOW WRAPPED	B	51 M	3,5	Delicate hollow, stainless steel hollow and turbines	
134° C HOLLOW WRAPPED		49 M		Stainless steel hollow and turbines	
134° C PRION		60 M		Stainless steel hollow and metal instruments	
134° C POROUS		58 M	1,0	Porous loads	
134° C HOLLOW OPEN		41 M	4,5	Stainless steel hollow and turbines	

### S-CLASS

TEMPERATURE AND NAME OF CYCLE	TYPE	TOTAL TIME	WEIGHT	STERILIZABLE MATERIALS AND INSTRUMENTS	WRPD
BOWIE & DICK TEST	Test	35 M	0	Steam penetration test	-
VACUUM TEST		15 M		Leak detection test	-
121° C HOLLOW WRAPPED	S	57 M	2,5	Delicate hollow, stainless steel hollow	
134° C HOLLOW WRAPPED		55 M		Stainless steel hollow	
134° C PRION		66 M		Stainless steel hollow and metal instruments	
134° C POROUS		63 M	0,5	Little porous loads	
134° C FAST		40 M	3,5	Rubber solids and metal solids	

### N-CLASS

TEMPERATURE AND NAME OF CYCLE	TYPE	TOTAL TIME	WEIGHT	STERILIZABLE MATERIALS AND INSTRUMENTS	WRPD
121° C SOLIDS OPEN	N	58 M	2,5	Rubber solids and delicate solids	
134° C SOLIDS OPEN		46 M		Rubber solids and metal solids	
134° C PRION		60 M		Metallic Instruments	
121° C FAST		48 M	4,5	Rubber solids and metal solids	
134° C FAST		38 M		Rubber solids and metal solids	

# TECHNICAL DATA



KRONOS B23

B23	S23	N23	
fractionated	pre and post vacuum	no vacuum	TYPE OF VACUUM
<p>✓</p>			INTEGRATED STEAM GENERATOR
			BUILT-IN PRINTER
			M.T.S MEMORY TEST SYSTEM
			CONNECTION TO EXTERNAL DATA LOGGER
optional			INTERNAL USB DATA LOGGER
505Wx690Dx400H mm			OVERALL MEASURES
ø236x530 mm			CHAMBER SIZE
nr. 4 trays: 185Wx440Dx19H mm			TRAY SIZES
230 V ± 10%			SUPPLY VOLTAGE
50-60 Hz			MAINS FREQUENCY
2400 W			RATED POWER

# TICHE 60 L



## SMALL FOOTPRINT HUGE CAPACITY

- CAPACITY 60 LITERS
- BUILT-IN OSMOTIC SYSTEM
- DOUBLE VACUUM PUMP
- DOUBLE MOTOR-OPERATED LOCKING SYSTEM
- INTEGRATED USB STORAGE DEVICE
- ON BOARD PRINTER
- QUIKSTEAM PATENTED TECHNOLOGY
- ADDITIONAL DRYING OPTION
- « START DELAY » OPTION
- B/S/N-CLASS CYCLES INCLUDED



NEWMED 60 L STERILIZERS ARE SUPPLIED WITH:  
TRAYS HOLDER | ALUMINIUM TRAYS | CLEANING SPONGE | 2 SILICON - INSULATED GLOVES | TUBES AND FITTING  
CD SOFTWARE | OSMO3 PROTECTION FILTER

# B60 L

## RECOMMENDED CYCLES

● OPEN ● WRAPPED

TEMPERATURE AND NAME OF CYCLE	TYPE	TOTAL TIME		WEIGHT	STERILIZABLE MATERIALS AND INSTRUMENTS	WRPD
		B60	B60SI			
HELIX TEST - B&D TEST	TEST	75 M	45 M	0	Steam penetration test	-
VACUUM TEST		15 M	15 M		Leak detection test	-
121° C HOLLOW WRAPPED	B	140 M	90 M	12,00	Delicate hollow, stainless steel hollow and turbines	●
134° C HOLLOW WRAPPED		135 M	85 M		Stainless steel hollow and turbines	●
121° C SOLIDS WRAPPED	S	125 M	75 M		Rubber solids and delicate solids	●
134° C SOLIDS WRAPPED	S	120 M	60 M		Rubber solids and metal solids	●
134° C PRION	B	150 M	90 M		Stainless steel hollow and turbines	●
134° C POROUS		160 M	110 M		6,00	Porous loads

# TECHNICAL DATA

B60	B60SI	
fractionated		TYPE OF VACUUM
-	✓	INTEGRATED STEAM GENERATOR
Bowie&Dick/Helix/Vacuum		TEST PROGRAMS
✓		BUILT-IN PRINTER
		M.T.S MEMORY TEST SYSTEM
		CONNECTION TO DATA LOGGER
		INTERNAL USB DATA LOGGER
INTEGRATED WATER PURIFICATION SYSTEM ROSI		
135 kg	138 kg	WEIGHT
655Wx850Dx755H mm		OVERALL MEASURES (WITHOUT CABINET)
ø350x622 mm		CHAMBER SIZE
nr. 4 trays: 2 trays 310Wx550Dx25H mm 2 trays 220Wx550Dx25H mm		TRAY SIZES
230 V ± 10% (1 phase)	400 V ± 10% (3 phases)	SUPPLY VOLTAGE
50-60 Hz		MAINS FREQUENCY
11 Amp	13 Amp per phase	RATED POWER

# ANIMA LAB

animal facility and laboratory equipment • animal research models

[info@animalab.eu](mailto:info@animalab.eu)

[www.aniamalab.eu](http://www.aniamalab.eu)

## NEWMED STERILIZERS ARE IN COMPLIANCE WITH:

93/42/CEE	Medical Device Directive (MDD)
2014/68/EU	Pressure Equipment Directive
2012/19/EU	Waste electrical and electronic equipment (WEEE)
EN 13060:2015	Small steam sterilizers
CEI EN 61010-1	Safety prescriptions for electrical, measuring, control and laboratory equipment
CEI EN 61010-2-040	Safety requirements for electrical equipment for measurement, control, and laboratory use - Part 2-040: Particular requirements for sterilizers and washer disinfectors used to treat medical materials
CEI EN 61326-1	Electrical equipment for measurement, control and laboratory use - Prescriptions of electromagnetic compatibility



*Newmed*