

## OXYLITE™

Single-channel tissue oxygen monitor



## OXYLITE™ PRO

Multi-channel tissue oxygen monitor

## Gold standard tissue $pO_2$ and *in vitro* dissolved oxygen monitors

- Oxygen monitors for *in vivo* tissue  $pO_2$  and *in vitro* dissolved oxygen measurements
- Intended for hypoxia and ischaemia research
- Outstanding accuracy, stability, and performance
- Absolute units of partial pressure in mmHg or kPa
- Unrivalled ease of use, no sensor calibration required
- Measurement from up to 4 sensors simultaneously\*
- Intuitive touch-screen user interface\*

### The recognized Gold Standard

The OxyLite™ brand is recognized the world over in biomedical hypoxia and ischaemia research, boasting more than 600 peer-reviewed journal citations and hundreds of units sold globally.

### The easiest to use oxygen monitor in the world

Fully 'plug and play' sensors, no user sensor calibration procedures, no sensor drift, built-in temperature compensation, oxygen measured in absolute units, integrated touchscreen\*. Put simply, no oxygen monitor is easier to use.



### Applications

pO<sub>2</sub> in cancer biology, angiogenesis, stroke and brain injury, vital organ and muscle tissue monitoring, flap monitoring, ophthalmology, wound healing; dissolved oxygen monitoring in cell culture, bioreactors, and more.

### Absolute units of oxygen

OxyLite™ provides a measurement of dissolved oxygen in absolute units of mmHg or kPa. In tissues this represents a direct readout of oxygen availability to the cell microenvironment, in contrast to blood oxygen saturation assessment, which merely describes the haemoglobin oxygenation status.

### Performance

Our third-generation fluorescence-based 'optode' sensor technology provides unmatched sensitivity, stability, and accuracy in the physiologically relevant oxygen range.



### Multi-channel productivity

The OxyLite™ Pro is available as a 2-channel or a 4-channel device for the independent measurement from up to 4 sensors. It features a touchscreen display presenting data in both digital and graphical formats, and providing access to additional instrument settings.

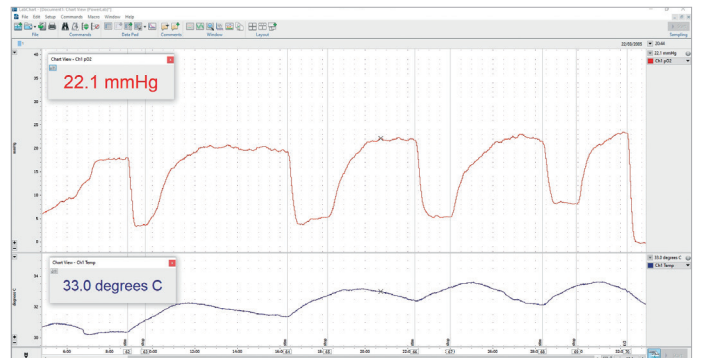


### OxyFlo™ ready

OxyLite™ monitors are configured for use alongside our OxyFlo™ tissue perfusion monitors for the simultaneous measurement of tissue oxygen and blood flow using unique multi-parameter sensors.

### Data logging

A choice of traditional 0-5V analogue outputs and a digital data output compatible with the popular LabChart® Pro charting software by ADInstruments is offered across all OxyLite™ monitors.



### 2-year product warranty

All OxyLite™ monitors are covered by our comprehensive 2-year manufacturer's warranty.

\*OxyLite™ Pro monitors only

Intended use statement: OxyLite™ and OxyLite™ Pro are intended for laboratory, industrial and research use only.