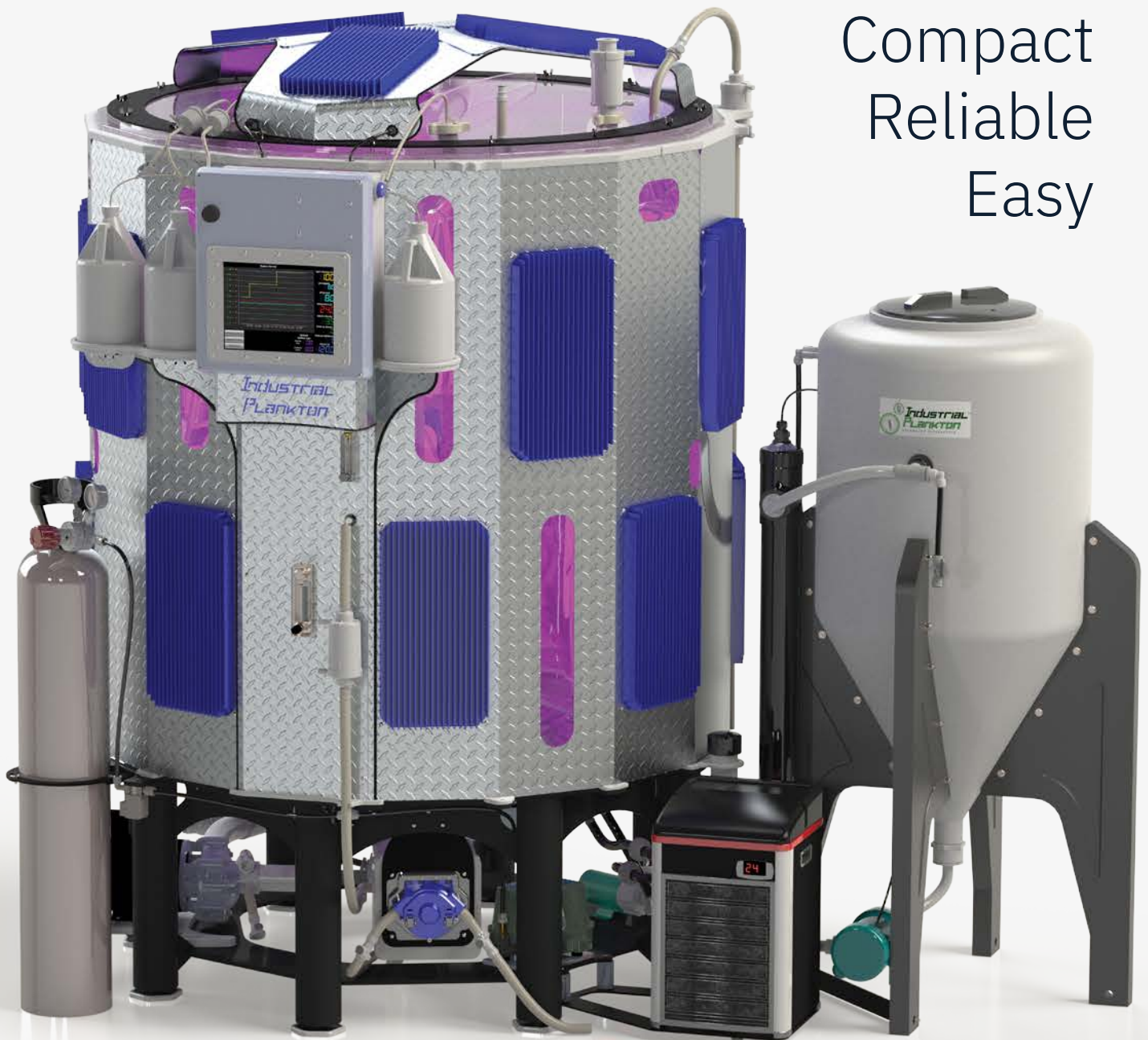


# **Industrial™ Plankton**

# PBR 1250L

Biosecure  
Compact  
Reliable  
Easy



[www.industrialplankton.com](http://www.industrialplankton.com)

# PBR 1250L Algae Bioreactor

Five easy steps to reliable, biosecure live algae



## Order & Install

Your algae equipment ships directly from our facility. Uncrate and set up in less than 4 hours.

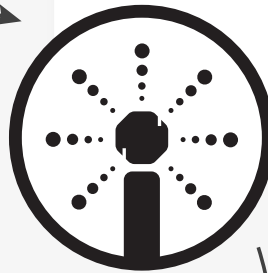
## Harvest

The PBR automatically harvests continuously for months, or the entire batch can be harvested at any time.



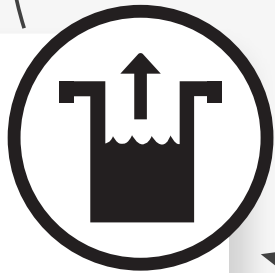
## Clean

Run the clean-in-place (CIP) system to clean the reactor before inoculation.



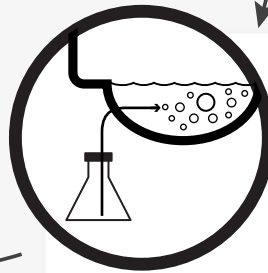
## Scale up

Add nutrients and water automatically, while temperature and pH are constantly regulated to optimize growth.

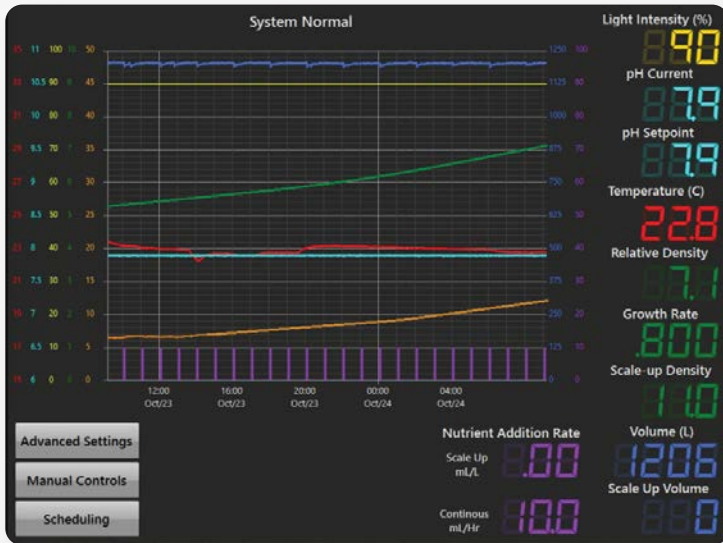


## Inoculate

Inoculate with a small volume of clean algae using biosecure disconnects.



# Industrial<sup>TM</sup> PLANKTON



Real Time Data Logging



Web-Based Remote Access

## Continuous Production

200-500 L harvested/day

### By Species (10<sup>6</sup> cells/mL)

- 25 • *Thalassiosira pseudonana*
- 20 • *Isochrysis* sp.
- 115 • *Nannochloropsis* sp.
- 3.8 • *Tetraselmis* sp.
- 23 • *Chaetoceros muelleri*

### By Weight (Ash Free Dry Weight)

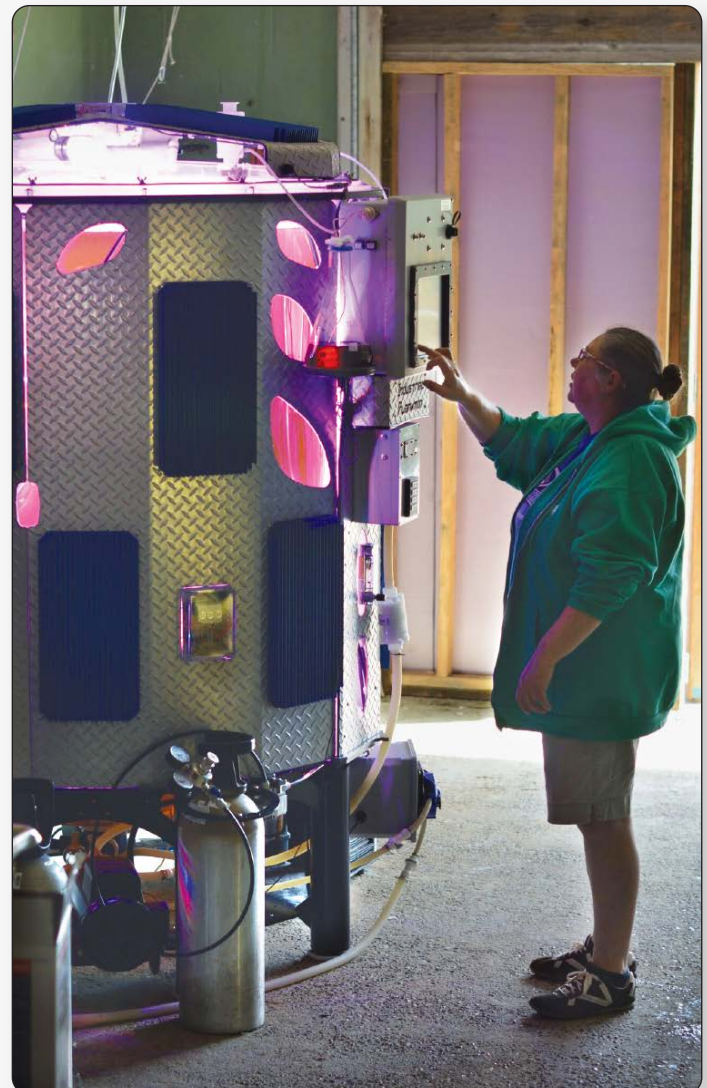
150-300 g produced/day  
0.6 g/L density

Batch densities typically 2-3X  
that of continuous

### More algae that thrive

- *Thalassiosira weissflogii* • *Pavlova* sp.
- *Karenia brevis* • *Skeletonema* sp.
- *Chaetoceros gracilis* • *C. calcitrans*
- *Haematococcus pluvialis* • *Spirulina* sp.
- *Chlamydomonas* sp. • *Chlorella* sp.

Production may vary based on quality of strain & inoculum



Touchscreen Controls

# Industrial™ Plankton

1 (844) 818-0304 • Victoria • British Columbia • Canada



Protect your Algae Bioreactor with **PlanktonCare**



100L



1250L



2500L